

Durashield HD Series seals address heavy duty processing applications while reducing material loss and maintaining bearing integrity. The unique design and configurable options deliver an effective sealing solution for any processing application. Designed to handle higher shaft speeds, excessive face pressure, shaft misalignment and run-out while maintaining a positive seal in temperatures from **-60°F** to **600°F**.

HD Seals are an effective sealing solution for wet, dry, powder or slurry processing environments and are widely used throughout the Dairy, Food, Pharmaceutical, Mineral and Chemical processing industries.

- Manufactured in shaft diameters from 0.625" to 4.50" (metric sizing available)
- Full, Semi & Non-split configurations
- Easy on-site rebuilding with comprehensive rebuild kits

#### TECHNICAL SPECIFICATIONS:

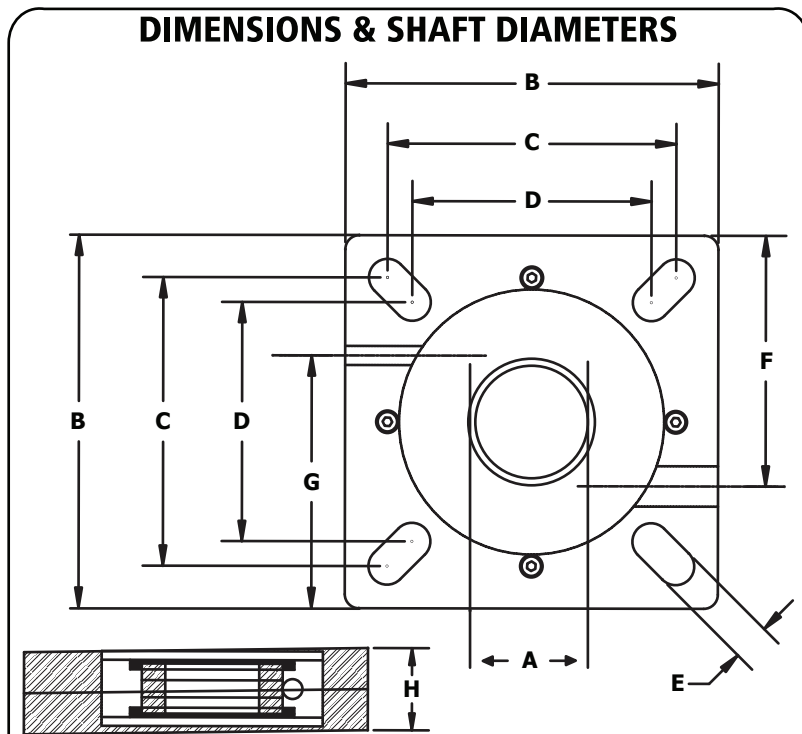
- Temperature Capability: **-60°F** to **600°F** (HT Option)
- Pressure Holding: 20 psig
- Vacuum Holding: 10 hg
- Air Purge Connection Operating Pressure: 5-7 psig
- Typical Air loss: 1.5 - 2.0 SCFM
- Maximum Shaft Run Out: .250" TIR
- Stuffing Box Misalignment: .015 TIR per inch of shaft
- Shaft Growth:  $\pm 1/16"$
- Shaft Tolerance:  $\pm 1/16"$
- Mounting Deviation: 1°
- Standard Housing Thickness: 1.875"
- Shaft Speed: Variable by shaft diameter
- Torque setting for seal mounting: 50 Ft.lbs

#### STANDARD CONFIGURATION:

- Compliant for Food, Dairy, Pharmaceutical & Non-Corrosive processing
- Effective for wet, dry, powder or slurry processing applications
- Process rated for **-60°F** to **350°F**
- Housing: T6-6061 Aluminium
- Faceplate: 304 Stainless Steel
- Elastomer Boot: EPDM-Silicone (FDA Compliant)
- Wear Plates: PTFE-Teflon (FDA Compliant)
- Air or Grease purge
- Easy onsite rebuilding & maintenance

#### CONFIGURATION OPTIONS: (\*Non FDA Compliant Materials)

- Housing: 304 & 316 Stainless Steel, Hastelloy, Inconel, Carpenter 20
- Elastomer & Drive: \*Hi-temp Elastomer (600°F), Chem-Ring, Self Adjusting
- Wear Plates: Teflon, \*Filled Teflon, Peek, Rulon, Vespel



| A - SHAFT DIA. | B - HOUSING | C - BOLT SQ. MAX | D - BOLT SQ. MIN | E - SLOT WIDTH | F - ELASTOMER ADJ. | G - AIR LINE | H - THICKNESS |
|----------------|-------------|------------------|------------------|----------------|--------------------|--------------|---------------|
| .625 - 1.00"   | 4.25"       | 3.25"            | 2.25"            | .48"           | 1.51"              | 1.38"        | 1.875"        |
| 1.25"          | 4.75"       | 3.63"            | 2.88"            | .48"           | 1.62"              | 1.63"        | 1.875"        |
| 1.50"          | 5.50"       | 4.25"            | 3.87"            | .66"           | 1.78"              | 1.74"        | 1.875"        |
| 2.00"          | 6.50"       | 5.14"            | 4.24"            | .66"           | 2.33"              | 1.87"        | 1.875"        |
| 2.19"          | 7.25"       | 5.63"            | 4.88"            | .68"           | 2.60"              | 2.54"        | 1.875"        |
| 2.43"          | 7.50"       | 6.00"            | 5.25"            | .68"           | 2.53"              | 2.58"        | 1.875"        |
| 3.00"          | 8.00"       | 6.13"            | 5.88"            | .80"           | 2.55"              | 2.62"        | 1.875"        |
| 3.43"          | 9.25"       | 7.48"            | 6.17"            | .80"           | 3.09"              | 3.30"        | 1.875"        |
| 3.94 - 4.00"   | 10.25"      | 8.16"            | 6.67"            | .94"           | 3.48"              | 3.69"        | 1.875"        |
| 4.43 - 4.50"   | 10.88"      | 8.88"            | 7.75"            | .94"           | 3.46"              | 3.62"        | 1.875"        |

Dimensionally configured for type E & SCM medium duty 4-bolt flange bearings. Dura-Shield seals are also available for heavy duty RB end thrust bearings. For additional information please visit [www.durashieldseals.com](http://www.durashieldseals.com) or call (toll free) 1.877.243.7325

